

## Mission Statement

Our primary mission at St. Mary's is to come to know and follow Christ more fully and to make Christ more visible through worship and loving service.

St. Mary's is blessed to be a community diverse in age, lifestyle, economic status and faith experiences.

As the Cathedral parish located in the heart of St. Cloud, we are challenged to:

- Nurture faith that is centered in the Eucharist and the celebration of the sacraments for our members and the people of the Diocese
- Foster growth in Catholic spirituality through a faith formation process from 'cradle to grave'
- Reach out with empathy and understanding to the needy and to those who are alienated from the Church
- Enhance and strengthen the feeling of belonging and mutual support within the parish
- Awaken a greater sense of stewardship of time, talent and treasure in our parishioners



# Welcome

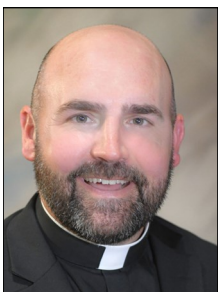
## St. Mary's Cathedral of the Diocese of St. Cloud



**Striving to nurture faith that is centered  
on the Eucharist and the celebration of the Sacraments**

**25 8th Ave. S., St. Cloud, MN 56301  
stmarystcloud.org | 320-251-1840**

## Our Contacts



**Rector**  
Fr. Scott Pogatchnik  
frpogatchnik@gmail.com  
320-251-1840



**Parochial Vicar**  
Fr. Brady Keller  
frkeller20@gmail.com  
320-251-1840



**Deacon**  
Dcn. John Wocken  
jwocken@ourcatholicschool.org  
320-251-1840



**Deacon**  
Dcn. Rick Scheierl  
rscheierl@gmail.com  
320-251-8335



**Deacon**  
Dcn. Mike Benda  
mjbenda@charter.net  
320-251-1840



**Office Manager**  
Kelly Bjork  
office@stmarystcloud.org  
320-251-1840 x0



**Choir Director**  
Eileen Farrell  
music@stmaryscathedral@gmail.com 320-251-1840



**Liturgy Director**  
Randy Symanitz  
liturgydirector@gmail.com  
320-251-1840 x 2



**Maintenance**  
Dan Primus  
320-251-1840

### The Church

Work behind the scenes to help keep our Cathedral in order.

- Church cleaning - help with general cleaning on a monthly basis
- Housekeeping - clean albs, purificators, candle holders
- Sewing - repair vestments, albs, altar linens
- Plant Care - water and care for the plants in the sanctuary and lower church
- Gardening - maintain flower beds
- Care for a shrine or statue - dust and clean

### Finance Ministry

Assist with the financial success of our parish

- Money Counter - count the collections
- Parish Finance Committee - help oversee budgeting process and provide advice on financial matters.
- Parish Council - elected position

### Events

Many hands are needed to help with parish events.

- Lenten Fish Fries
- Cook/Serve Soup Supper during Lent
- Volunteer as a married couple to plan and sponsor marriage enrichment programs such as "Tables for Two," retreats, social events, etc.
- Wedding Host
- Assist with Parish Socials
- Church Porter at special events
- Sponsor Couple for Marriage Preparation
- Host for Baptism Preparation
- Block Party
- Holy Thursday - Washing of Feet
- Good Friday Cross Bearer
- Tenebrae Candle Bearer
- Easter Vigil - Process in with water, blessed oils and plants
- Historian/Archivist

### Office Help

Help office manager with daily tasks.

- Office Work - answer phone, greet visitors
- Bulk Mailings - stuff and seal envelopes





### Liturgical Ministry

#### Mass

It takes many people to make our Masses possible and beautiful.

- Eucharistic Minister
- Reader/Lector
- Mass Server
- Sacristan
- Sanctuary Care
- Sanctuary Decorator

#### Hospitality

Lend your beautiful smile and friendly attitude by welcoming parishioners and visitors to Mass and other parish events.

- Greeter
- Usher
- Hospitality Host

#### Music

Music is a sign of God's love for us and of our love for Him.

- Choir
- Cantor
- Instrumentalist

#### Funeral

- Choir
- Cantor
- Instrumentalist
- Mass Server
- Greeter
- Lunch Server

### Faith Formation Ministry

Handing on our faith is a critical part of our Faith Community. Helping each other learn brings us into a closer relationship with God and others.

- Catechesis of the Good Shepherd (ages 3-6)
- Family Formation (grades 1-6)
- SEND (grades 7-9)
- Confirmation
- Totus Tuus
- Youth Events
- RCIA
- Children's Liturgy of the Word
- Adult Study Group
- Adult Bible Study

### Outreach Ministry

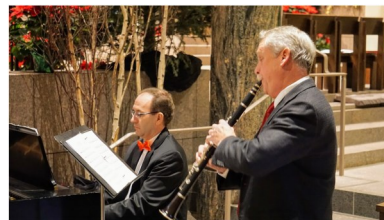
These are short term volunteer opportunities to bring Christ to our community by feeding the hungry and housing the homeless.

- Deliver donations to food shelf
- Assist with Community Meal
- Deliver meals to homebound, one week, twice per year
- Work at the Caritas Food Shelf, usually September
- Day of Joyful Giving
- Raphael Luncheon (May, October, December)

### Health Ministry

Health Ministers are positioned to make a positive and in some cases a life changing impact on fellow parishioners.

- Transportation - provide a ride for those without transportation
- Eucharistic Minister - provide communion to the homebound
- Prayer Blanket - sew and/or distribute blessed prayer blankets to the ill.
- Prayer Line - pray for ill parishioners and their families



Call St. Mary's office at 251-1840 for more information

## Our Mass and Events Schedule



### Mass Schedule

#### Weekend

- Saturday 5:00 pm Mass
- Sunday 9:30 am Mass
- 6:00 pm Mass

#### Weekday

- Monday-Saturday 7:00 am Mass
- Monday-Friday 12:05 pm Mass

#### Holy Days of Obligation

See bulletin for times

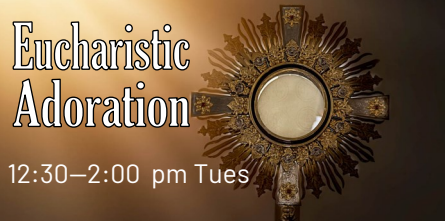
#### National Holidays

See bulletin for times

### Office Hours

September - May  
Monday - Friday: 9:00 am - 1:30 pm


June - August  
Monday - Thursday: 9:00 am - 1:30 pm  
Friday 9:00 am - 12:00 pm



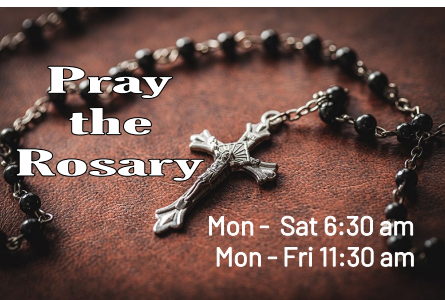
**Eucharistic Adoration**  
12:30-2:00 pm Tues



**STATIONS OF THE CROSS**  
5:30 pm Fridays during Lent



**Sacrament of Reconciliation**  
Thur 4:30 pm  
Fri 4:30 pm  
Sat 6:00 pm  
Penance services in Advent and Lent



**Pray the Rosary**  
Mon - Sat 6:30 am  
Mon - Fri 11:30 am

## Our History

St. Mary's parish was founded in 1855 by Fr. Francis Xavier Pierz, a prolific missionary who established many parishes in Minnesota.

Our history is closely tied to the arrival and history of the Benedictines at St. John's Abbey in Collegeville and St. Benedict Monastery in St. Joseph who served the newly forming "mission" parishes.

St. Mary's parish took shape in 1854-1855 while Fr. Pierz offered Mass in the log homes of the first settlers in the area. Plans were made and executed to organize the new parish. The first church was a small, wooden, L-shaped building located across the street from the present parish office on Eighth Avenue in St. Cloud.

It was not until 1856 that St. Mary's was assigned its first pastor, Fr. Cornelius Wittman, OSB, a Benedictine priest from St. John's in Collegeville.

Education was important to the early Catholic settlers and it was common for the priest to start a school in a parishioner's home or other facility, as was the case in St. Mary's parish. In 1857 a group of Benedictine Sisters arrived to teach but were not adequately accommodated and returned to the mother house in St. Joseph. By 1869 the parish was better developed and asked the Benedictine Monastery for two Sisters to take charge of St. Mary's School.



Interior of 1864 Church

The congregation grew so rapidly that a larger, gothic-style church was built on Saint Germain Street and Ninth Avenue in 1864. In 1868, a large rectory was built in the area that is now the Cathedral garden on the north side of church.

As the congregation grew, so did the need for more classrooms for children. The third school was built and dedicated in 1896 and still stands today. The tallest part of the St. Mary's School building is the original school. In 1907, a large convent was built to accommodate the increasing number of Sisters.



St. Mary's School built in 1887 (SJAA)

## Items of Interest

Following are just a few of the many unique and historic items within the Cathedral.

### Gothic/Romanesque Style

St. Mary's Cathedral embraces Romanesque architecture, recognized by its massive quality, thick walls, round arches, large towers, beautiful portico, and clerestory windows set high above the main aisles.

### The Bishop's Chair (Cathedra)

The Bishops chair - the *cathedra* - is located behind the altar. The presence of this teaching chair signifies that St. Mary's is the diocesan Cathedral. The bishop, as pastor of the Cathedral, is the only one who uses this chair.

### St. Cloud Shrine

The St. Cloud Shrine, a significant shrine of our patron saint, is found on the north side of the upper church. The fascinating story of St. Cloud and this special shrine is available at the shrine.

### Statue of Mary, Mother of the Redeemer

This carved wood statue was created by William Thompson of Athens, Georgia, and was blessed in 1984. Its circular motion leads to the Christ Child's blessing hand. It is located to the left of the sanctuary.



St. Cloud Shrine

### The K.C. Marrin Pipe Organ

This significant tracker-action pipe organ, dedicated in 1984, was designed by Kevin C. Marrin. We hope to add another keyboard/division as we find a generous donor. This will add many more pipes and will provide the important undergirding of lower tones.

### The Lower Church Pipe Organ

The small organ in the lower church was built in 1857 for a church on the East Coast. St. Mary's purchased it and had it rebuilt upon renovation of the lower church in the 1990s.

### The Gallery Pipe Organ

The small pipe organ in the gallery is one of several made for various churches and chapels in the diocese. It is currently used to accompany choir and ensembles at special times of the year.

# Parish Pastoral Council and Parish Groups

## Pastoral Council

The Parish Pastoral Council is the sounding board for all other parish committees. It serves as the liaison between the people of the parish and the Rector. It is the chief advisory board to the Rector. The Parish Pastoral Council meets several times a year in the Rectory.

## Finance Council

The Finance Council oversees the financial affairs of the parish. It is responsible for planning, implementing and maintaining the parish budget. This group, accountable to the Pastoral Council, meets several times a year.

## Block Party Committee

The Block Party is the parish's most important fundraiser and is held in September. The committee meets throughout the year.

## Funeral Lunch Group

This group serves a meal for the family and friends of the deceased following the funeral liturgy and burial.

## Daughters of Isabella

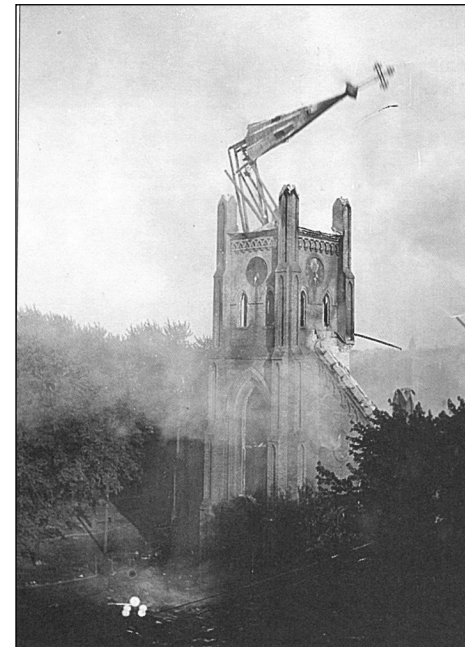
Daughters of Isabella is an organization founded on the principal of its motto: Unity, Friendship and Charity. Members encourage each other's development in every aspect of life—spiritual, social and charitable.

## Knights of Columbus

The Knights of Columbus is an international association of Catholic men who are committed to making their community a better place, while supporting their local Catholic church. KC Council #961 meets in the Mary Center on the second Monday of the month at 6:00 pm.

## Men's Prayer Group

All men are invited to share an hour of reflection in prayer and reading of the Gospel with other men each Saturday morning from 8:00 - 9:00 in the Mary Center of St. Mary's Cathedral. Friends from other parishes are also welcome! This group is led by Deacon Mike Benda.

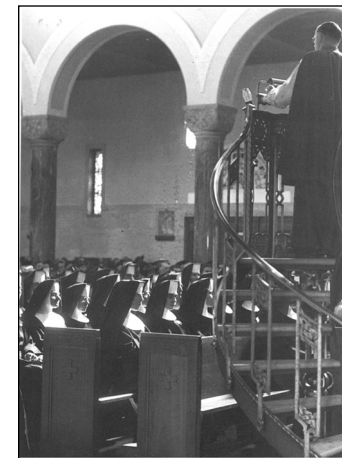


Tragic fire of 1920

In 1911 St. Mary's added a large parish center, St. Mary's Hall, which was expanded in 1917 and renamed the St. Cloud Institute. The Institute was offered to the city to help serve those affected by the deadly influenza epidemic of 1918. In 1928 it was transferred back to St. Mary's parish and successfully served many people and functions and needs. Much later, due to its compromised condition and changing parish needs, the center was razed in 1972.

Tragically, in the summer of 1920, St. Mary's church caught fire and burned to the ground in flames so hot the tower bells melted and dripped down the steeple. A few items were saved but the building was a complete loss.

Planning began immediately to rebuild. In 1922, Fr. Luke Fink, OSB, traveled to Italy to attend the Eucharistic Congress. He returned with plans to model the new St. Mary's Church after a fifth-century basilica in Ravenna, Italy. Construction began in 1922. When the basement was finished, it provided a space for worship (now called the "lower church"). The upper church was completed in 1931 during the depression. Clearly this was a work of love and sacrifice for the parishioners to contribute so much during those grueling years.



Nuns listen to priest from elevated pulpit in 1950

Around that time, Holy Angels Church, the Cathedral of the Diocese, burned to the ground in 1933. It was rebuilt, but not to its former beauty. In 1937, by decree of the Holy See, St. Mary's Church became the new diocesan cathedral—St. Mary's Cathedral.

In January 2013, a refurbishing project of the Upper Church began. Interior changes to the Upper Church included a new floor, painting to the walls and ceiling, refurbishing of pews, and new kneelers.



Refurbishing project in 2013

# Sacraments and Outreach Ministries

## Rite of Christian Initiation of Adults

The Rite of Christian Initiation of Adults (RCIA) is the normative way in which adults become full, active and participating members of the Catholic Church. The RCIA involves the whole parish: in prayer, as the rites are celebrated; in hospitality, as new members are welcomed; and in specific ministries as sponsor, or catechist.

The Rite of Christian Initiation of Adults describes:

- the rite of Baptism of adults
- the reception of baptized adults into full communion in the Catholic Church
- the period of instruction
- liturgical rites celebrated throughout the liturgical year

## Candidates For Full Communion With The Catholic Church

Those who are contemplating membership in the Roman Catholic Church from another Christian denomination are welcome to participate in the formation process with those who desire baptism. The process does differ in that catechumens are *coming to faith* and celebration of Sacraments of Initiation while those who are previously baptized in another Christian denomination *are already members of the Body of Christ*. However, for full communion in the Roman Catholic Church, those who are candidates prepare for the celebration of Confirmation and Eucharist in the Church.

## Baptism

Baptism is the beginning of our journey of faith within the Church. At baptism parents promise to "raise their child in the practice of the faith." This, of course, presumes a relationship with the Church through worship, an individual prayer life, as well as a willingness to conform their own life to the Gospel of Jesus Christ within the Church. Baptism preparation classes are held monthly.

To be baptized at St. Mary's Cathedral parents must:

- be registered and active (Eucharistic) members of the parish
- participate in baptism preparation sessions
- provide the necessary information about the child and his/her birth, etc.



## Mary Center

The former parish school—now called “Mary Center”—is the site for religious education and our parish center. It is located behind the northwest side of the church off First Street. The parish center is at the basement level of the school. No elevator is available.

## Use of Parish Facilities

The parish facilities are available on a limited basis for private meetings and gatherings. Parishioner and non-parishioner groups may rent the facilities. All events must have prior approval from the office manager who will check the availability of the facility requested.

## Borrowing Tables, Chairs, or Kitchen Equipment

Due to the size of the parish and the constant use of equipment, St. Mary's cannot authorize anyone to borrow or rent kitchen equipment, tables, or chairs.



# Our Facilities

## Upper Cathedral Church

The upper church is used primarily for weekend liturgies and special events. There are three front doors at the upper portico at the top of the steps. There are also three doors on the south side of the church and two doors on the north side that lead to both the upper and lower churches.

## Lower Church

Daily Mass and most funerals are celebrated in the lower church.

## Gathering Space

The lower church also contains a special worship chapel and a space for gathering for socials and meetings. A small serving kitchenette is attached.



## Handicap Access to the Church

An elevator at the northwest corner of the Cathedral provides access to the upper and lower churches. Parking near the elevator can be accessed from the alley next to the St. Cloud Mission Shop off Eighth Avenue.

## Restrooms in Church

Restrooms are located near the elevator in the upper and lower levels of the church on the northwest side. A restroom is also in the bell tower and can be accessed at the front of the upper church and to the left, near the Marian statue of Blessed Mary and baby Jesus. There is also a restroom in the lower vestibule of the church, off the gathering space. In addition to the elevator, the upper lobby of the church has spiral staircases that lead to the lower level.

## Parish Office and Rectory

The parish office and rectory are connected to the north side of the church on Eighth Avenue. The rectory has a large living room used for various gatherings.

## Weddings

A couple must start marriage preparation sessions at least six months prior to the anticipated wedding date. The marriage preparation process includes Fully Engaged—Diocesan Marriage Inventory. All couples married at the Cathedral must follow the policies for preparation laid out by the Diocese of St. Cloud and the policies set forth by the Cathedral for music, decoration and photography.

## Reconciliation

The Sacrament of Reconciliation may be celebrated on Thursday and Friday at 4:30 pm and on Saturday at 6:00 pm immediately following the 5:00 pm Mass. Reconciliation services are also scheduled during Lent and Advent.

## Anointing of the Sick

Anointing of the Sick is available for those whose health is threatened due to aging, injury or serious illness. If you would like a home visit, please call the parish office.

## Parish Funeral

We believe it is important to say “farewell” from the Cathedral altar table in a dignified and prayerful manner and in a way that consoles those who are grieving and gives hope to the living. Funeral arrangements are made with the Liturgy Director. Families may choose to have a luncheon served following the burial of their loved one. Arrangements are made through the funeral home.

## Community Meal

On the last Sunday of each month, Cathedral volunteers prepare and serve a meal to those who are not able to provide one for themselves. The food is prepared and provided at no charge at the Mary Center.



## Faith Formation

The six-parish All Called to Christ Area Catholic Community (ACC) of St. John Cantius, St. Anthony, St. Augustine, St. Mary's Cathedral, Christ Church Newman Center, and Holy Spirit have combined their resources to offer choices for Faith Formation for your family.

We offer opportunities for all ages to learn about our beautiful Catholic Faith and encounter Jesus! Visit [allcalledtochrist.org](http://allcalledtochrist.org) for complete details.



**OFFERINGS:**

- Catechesis of the Good Shepherd (ages 3-6)
- Young Disciples (grades k-6)
- Family Formation (grades k-6)
- First Reconciliation/ First Communion Preparation
- SEND (7th-9th)
- Confirmation (10th-12th)

**FIND TIMES AND DATES OF ALL PROGRAMMING: ALLCALLEDTOCHRIST.COM**




**REGISTER ONLINE: WWW.ALLCALLEDTOCHRIST.COM**

**Want to help as a volunteer? Contact Jackie! FFI@SPIRITANDSAINTS.ORG**

## Catholic Education



St. Mary's is blessed and privileged to offer a Catholic education to students in preschool through sixth grade. St. Katharine Drexel School embraces an educational environment that fosters **academic excellence** and **faith** as well as a life of **leadership** and **Christian service** to others, values that are key to a successful and meaningful life.

Our school offers a nurturing environment where each student is allowed and encouraged to reach his or her full potential. We believe in the value of self-discipline, hard work, and commitment to service. We care for your child's whole being - mind, heart, soul, and body.

### We believe ...

that God created each of us in His image. We provide a learning setting that is respectful of cultural and Christian diversity, recognizing the value of each individual. We acknowledge the realities of changing family and societal structures, and we strive to promote an awareness of our responsibilities as we participate in a global community.

### We believe ...

that excellence in education is achieved through close partnership between parents, students, teachers, and our larger faith community. Our greatest strength lies in the bond between our school and parishes of Sacred Heart, St. Augustine, and St. Mary's Cathedral. Through our school's unique connection to parish life, the spiritual development of our student body is nurtured within the framework of the Gospel and the traditions of the Catholic Church.



For more information, please call the school office at 320-251-2376 or visit [OurCatholicSchool.org](http://OurCatholicSchool.org).

